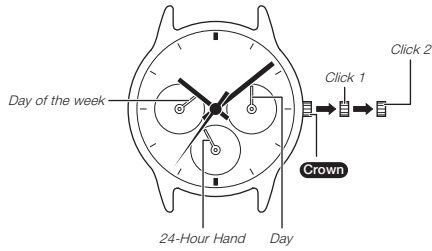


Operation Guide 5420/5421

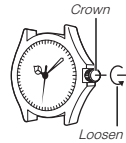
CASIO®

- Your watch may differ somewhat from the one shown in the illustration.



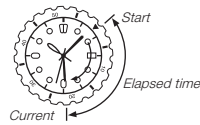
Crown Operations

Some water-resistant models (100 meters, 200 meters) have a screw-in crown. When you need to perform a crown operation, rotate it towards you to unscrew it. Then pull the crown out. Avoid applying undue force when pulling. The watch loses its water resistance while the crown is unscrewed. After performing a crown operation, fully screw the crown back in.



If your watch has a rotary bezel...

You can rotate the bezel to align its ▼ mark with the minute hand. Then you will be able to tell how much time has elapsed since aligning the ▼ mark.



Specifications

Accuracy at normal temperature (per month)	Battery type	Battery life
±20 seconds	SR920SW	Approx. 3 years

To adjust the day of the week and time

When the second hand is at 12 o'clock, pull the **Crown** out to Click 2.

Rotate the **Crown** to advance the hour and minute hand settings, which will also change as the day of the week setting.

Rotate the **Crown** to change the time setting.

Push the **Crown** back in.

Note

- Take care that you set the correct AM or PM time.
- When changing the time, move the minute hand four or five minutes past your final setting, and then back it up to the setting you want.
- The 24-Hour Hand indicates the current hour of the day. It makes one complete rotation every 24 hours.

To change the day setting

Pull the **Crown** out to Click 1.

Rotate the **Crown** to set the day.

Push the **Crown** back in.

Note

- The day setting uses a 31-day month. Make adjustments for months of shorter lengths.
- Avoid changing the day setting between the hours of 9 p.m. and 1 a.m. Otherwise, the day setting may not change correctly at midnight.